



Ridge Creek Fire

Idaho Panhandle National Forests, Coeur d'Alene River Ranger District
Fire Information 208-557-8813

<https://inciweb.wildfire.gov/incident-information/idipf-ridge-creek>

September 18, 2023

Location: Approximately 3.5 miles east of the north tip of Hayden Lake, along the Hayden Creek Road (Forest Service Road 437) from the Ridge Creek drainage to South Chilco Mountain.

Start Date: 8/3/2023 **Cause:** Human-caused **Size:** 4,474 acres **Containment:** 80%

FIRE STATUS

Minimal fire behavior has been observed on the Ridge Creek Fire, but expect to see occasional smoke as some interior vegetation burns. This smoldering is located within the northern perimeter of the fire near South Chilco Mountain, an area that poses minimal threat to further spread and will continue to be monitored by the local district. Suppression repair work is nearing completion, which includes removing hazard trees along roadways, installing water bars, grading road surfaces, and using excavators and hand crews to place debris back on exposed surfaces to minimize erosion. A BAER (Burned Area Emergency Response) Team recently completed an assessment of the Ridge Creek Fire. Their recommendations and a burn severity map will be shared with the next update.

CLOSURES AND SPECIAL MESSAGES

With both safety and public access being high priority, a new closure with a greatly reduced footprint has been issued. The new closure includes: Forest Service land north of Forest Service Road (FSR) 206, west of FSR 209 and FSR 385, and south of FSR 332. Forest Service land surrounding Hells Canyon, the northern half of Tenderfoot Ridge, extending to Deerfoot Ridge in the west and north to Buckles Mountain and the surrounding area. All Forest Service Roads within described area: FSRs 392, 428A, 437, 1530. FSR 406 north of the junction with FSR 1511. Forest Service Trails 69, 234, 577, and 802 within the closure area. Please refer to the closure map for visual details.

###



Idaho Panhandle National Forests

Forest Closure: Ridge Creek Fire Closure

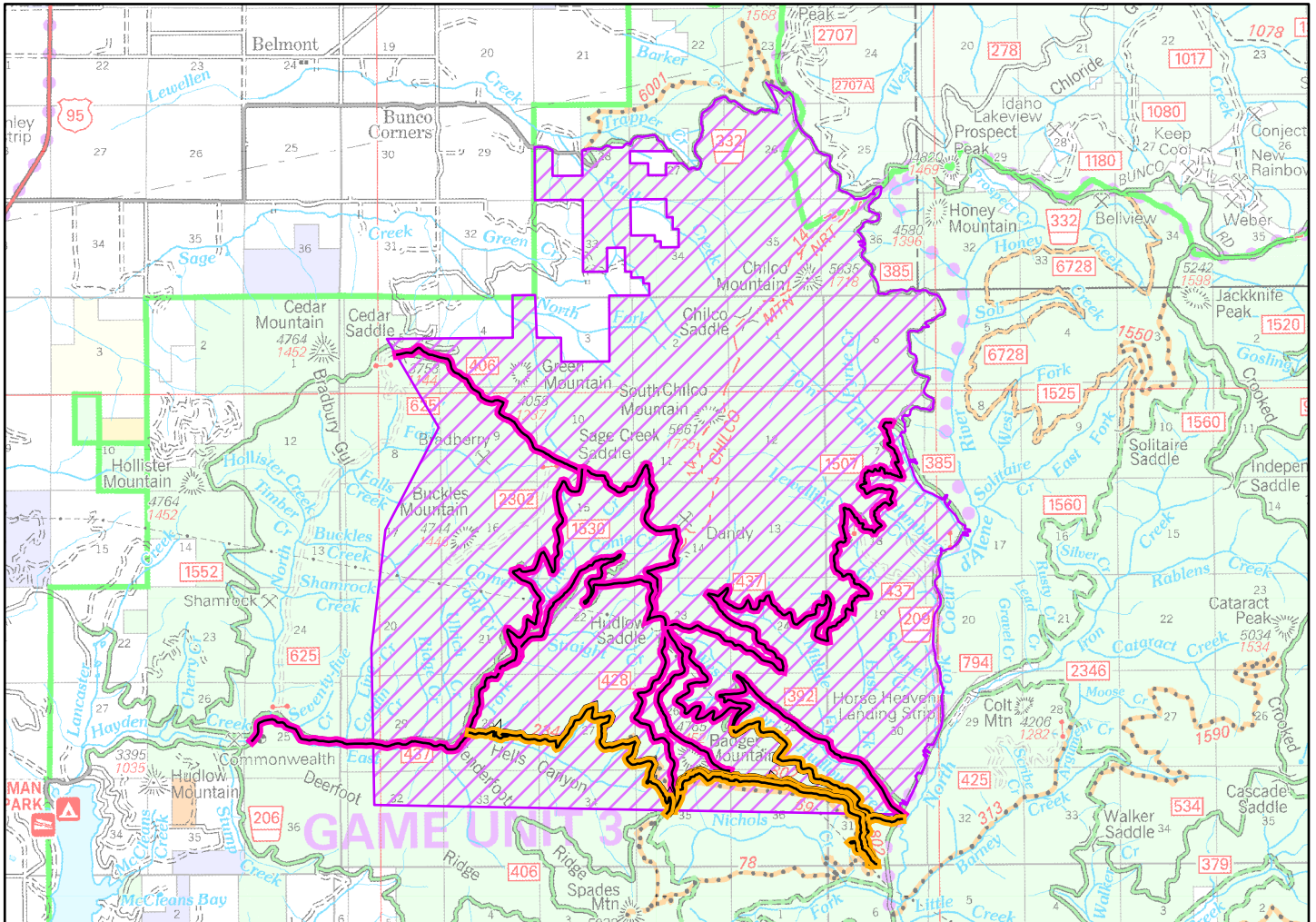
Order Number: 01-04-03-23-005



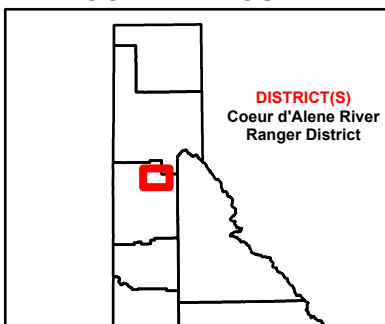
Effective Date : **SEPTEMBER 18th, 2023**

Exhibit A

Rescind Date : **SEPTEMBER 30th, 2023**



IDAHO KOOTENAI COUNTY



Closed Road Numbers:

-385
-392
-406
-428A
-437
-1530

Closed Trail Numbers:

-69
-234
-577
-802

Closures

- Road
- Trail
- Area

